



Private Education in a Public School Setting

Path to Reopening Our Schools



- R**emember to wear your mask
- E**ncourage hand washing
- S**ocial distance – 6 feet apart
- D**on't come to school sick




Do Your Part!

How RESD Will Decide to Reopen



ARIZONA DEPARTMENT
OF HEALTH SERVICES

Safely Returning to In-Person Instruction

 Cases	 Percent Positivity	 COVID-Like Illness
New cases per 100,000 population	Percent of positive COVID-19 tests	COVID-19 ER visits & hospitalizations
Minimal: less than 10	Minimal: less than 5%	Minimal: less than 5%
Moderate: 10 - 100	Moderate: 5 - 10 %	Moderate: 5 - 10%
Substantial: greater than 100	Substantial: greater than 10%	Substantial: greater than 10%

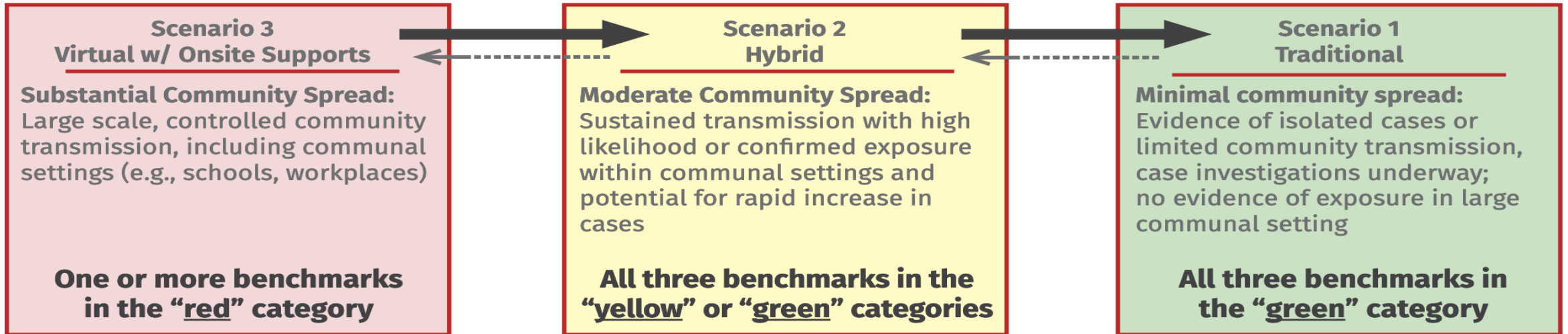
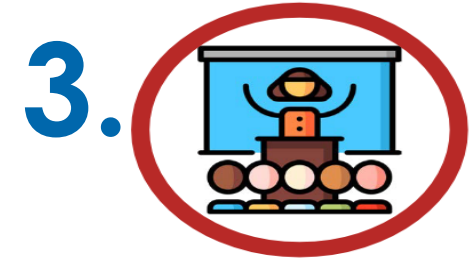
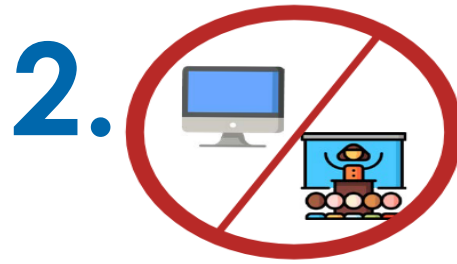
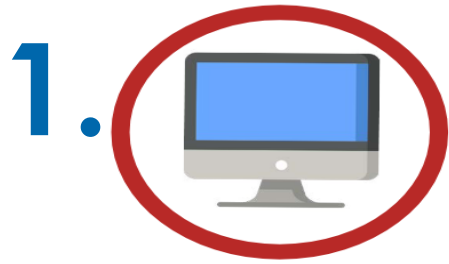


Initial Opening

ADHS recommends schools or school districts meet all 3 benchmarks at the county level in moderate or minimal transmission category for two weeks in order to begin hybrid learning.

RESD will use a 3 consecutive weeks as our guideline.
Hybrid Learning = Distant Learning & In-Person

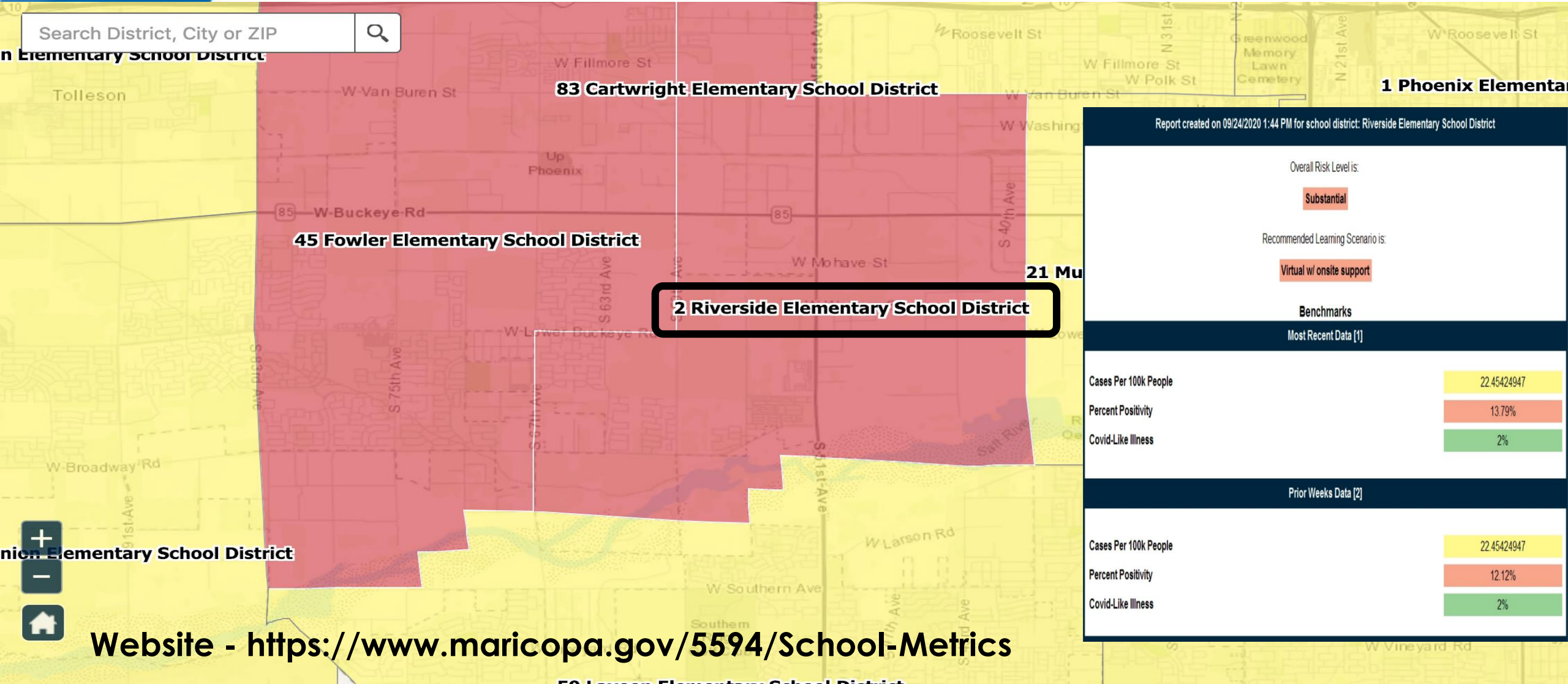
Understanding the Benchmarks



Benchmarks	Minimal	Moderate	Substantial
Cases	< 10 cases/100k	10-100 cases/100k	> 100 cases/100k
Percent Positivity	< 5%	5-10% *	> 10%
COVID-like Illness	< 5%	5-10%	> 10%

Data by Elementary School District

Last Updated September 24, 2020



Website - <https://www.maricopa.gov/5594/School-Metrics>

Meeting & Maintaining Benchmarks

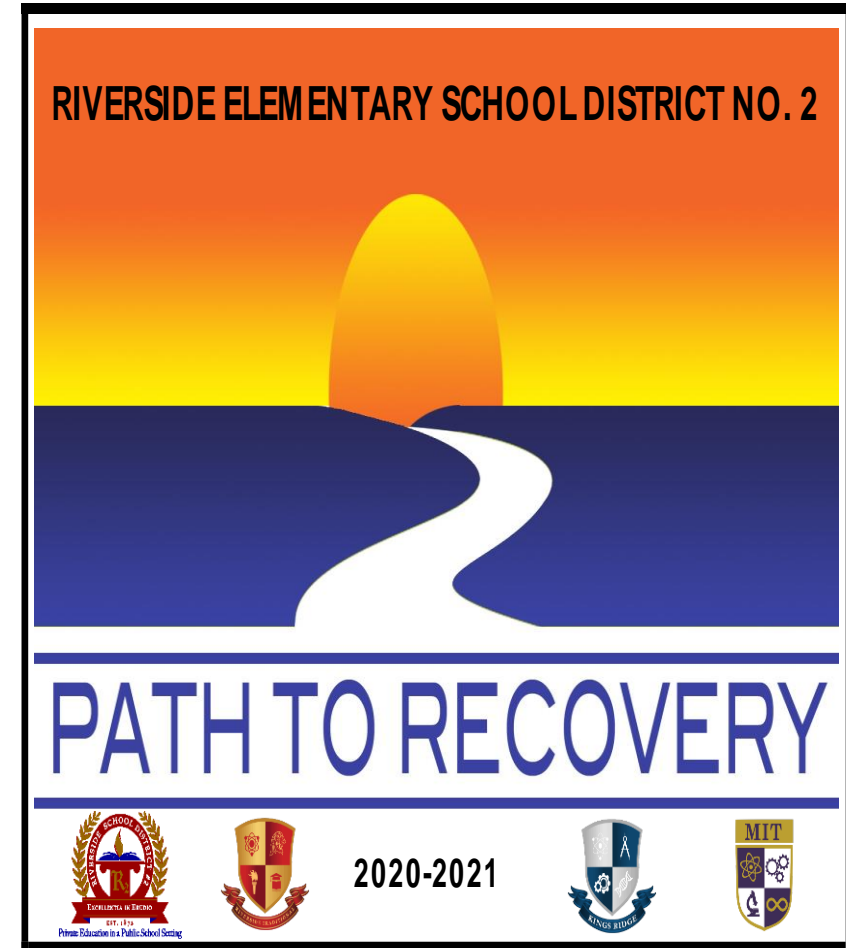
Benchmarks	Minimal	Moderate	Substantial
Cases	< 10 cases/100k	10-100 cases/100k	> 100 cases/100k
Percent Positivity	< 5%	5-10% *	> 10%
COVID-like Illness	< 5%	5-10%	> 10%

Cases, Percent Positivity and COVID-like Illness must be at minimal range for “3” consecutive weeks for RESD to Reopen to a Hybrid Model

Preparing for the Reopening

Riverside's Action Plan

- Promoting Behaviors that Reduce Spread
- Maintaining Healthy Environments
- Maintaining Healthy Operations
- Transporting Students
- Entering/Leaving School Buildings
- Serving Meals
- Movement on Campus
- Technology Plan
- Supporting Teaching & Learning
- Nurse Protocols and Procedures
- Kings Ridge's Athletics Program



For more information visit: <https://www.resdonline.org>

Parent Guide - Preparing for the Reopening

Temperature Checks for ALL



- All staff will have their temperature checked by the nurse as they arrive on campus
- Students will have their temperature checked as they arrive in the classroom
- Students will have their temperatures checked before boarding the busses

Face Masks are Mandatory

- Face Mask are required upon entering our campus.
- All staff will be wearing a face mask at all times to ensure our students safety
- All students will receive a 100% cotton reusable face mask



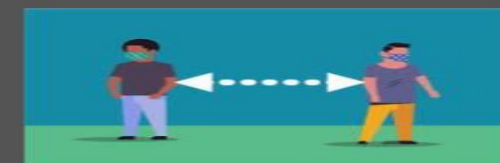
Frequent Hand Washing



- All students will be directed to wash their hands with soap and water after they have their temperature checked
- All students will wash their hands with soap and water each time they enter the classroom
- Hand sanitizer will be available in every classroom

Social Distancing

- Students will remain in one classroom all day
- Maximum spacing between student desks will be used in every classroom
- Teachers will rotate between classrooms for instruction when necessary
- Hallways will have markings to allow for single direction travel
- Students will be instructed to maintain social distancing at all times



Cleaning And Disinfecting



- High touch surfaces will be disinfected by staff throughout the day
- Deep cleaning of all classrooms will be done each Wednesday
- Students will wipe down their desk after eating breakfast and lunch
- Classrooms and common areas will be cleaned and disinfected daily and as needed

Parent Guide - Preparing for the Reopening



Transportation Procedures

- Students will have their temperature checked before boarding the bus
- Face masks must be worn at all times when riding the bus
- Student seating will be socially distanced as much as possible on the bus
- Busses will be sanitized daily and deep cleaned each week

Classroom Procedures

- Face Mask are required upon entering classrooms
- Students and teachers will wash hands upon entering classroom
- Students and teachers will have temperature checked upon arrival at classroom
- Student desks and classrooms will be sanitized throughout the day
- Student desks will be spaced to maximize social distancing in the classroom



Cafeteria Procedures



- Students will eat breakfast and lunch in their classrooms during the day until health regulations allow for the safe use of the cafeteria
- When health regulations allow for cafeteria use, students will wash hands upon entering cafeteria
- Face masks will be worn at all times within cafeteria
- Social Distancing will be maintained by students when in the cafeteria

Campus Visitor Procedures

- School campus will be closed to visitors unless approved by site principal
- If school visitation is approved visitor will be required to do the following:
 - Check in at office for temperature check and to sign health attestation
 - Wear face mask and visitor badge at all times while on campus
 - Maintain social distancing from all students while on campus
 - Check-out in office before leaving campus



How Parents Can Support Our Reopening

10 Things You Can Do To Prepare For Returning Back To School

1 Practice good hand hygiene



Teach your child to sing their ABCs or have them count for at least 20 seconds ensuring they wash, front, back and in-between their fingers.

2 Practice wearing face coverings



Throughout the day your child may need to wear a face covering on the bus and upon entering school. Teach them not to touch the inside of their face covering when removing it.

3 Practice maintaining 6 feet of distance



Measure the distance on the floor. Consider temporarily laying pieces of paper down for a visual reference.

4 Purchase a thermometer



Check your child's temperature every morning. If it's 100.4 or higher, they must stay home until fever free for 24 hours (without fever-reducing medication). If they develop a fever (or other symptoms) at school, they will be required to remain out of school for at least 24 hours.

5 Have a supply of face coverings



When possible, face coverings should only be used once and then washed. Consider making or buying multiple masks to give you time to wash between use.

6 Update immunizations and physical exams



Up-to-date immunizations are required for school, and sports physicals may be needed. Well care visits are important to a child's health. Immunizations can also be obtained at your local Public Health Dept.

7 Consider aerosolized medicine alternatives for asthma



Inhalers with a chamber are preferred over nebulizers for administering in school. Speak with your pediatrician for equipment options and updates to your Asthma Action Plan.

8 Purchase a reusable water bottle



Water fountains may not be readily available. Make sure your child has a reusable water bottle to bring to school, and instruct them not to share it with others. Water bottles and caps should be washed daily in warm soapy water, rinsed, and left to air dry upside down or run through the dishwasher.

9 Verify/update emergency contacts



If your child presents with COVID-like symptoms, they will be placed in a room and will need to be picked up immediately. Please ensure a contact can be reached at any given time.

10 Stay informed with reliable sources

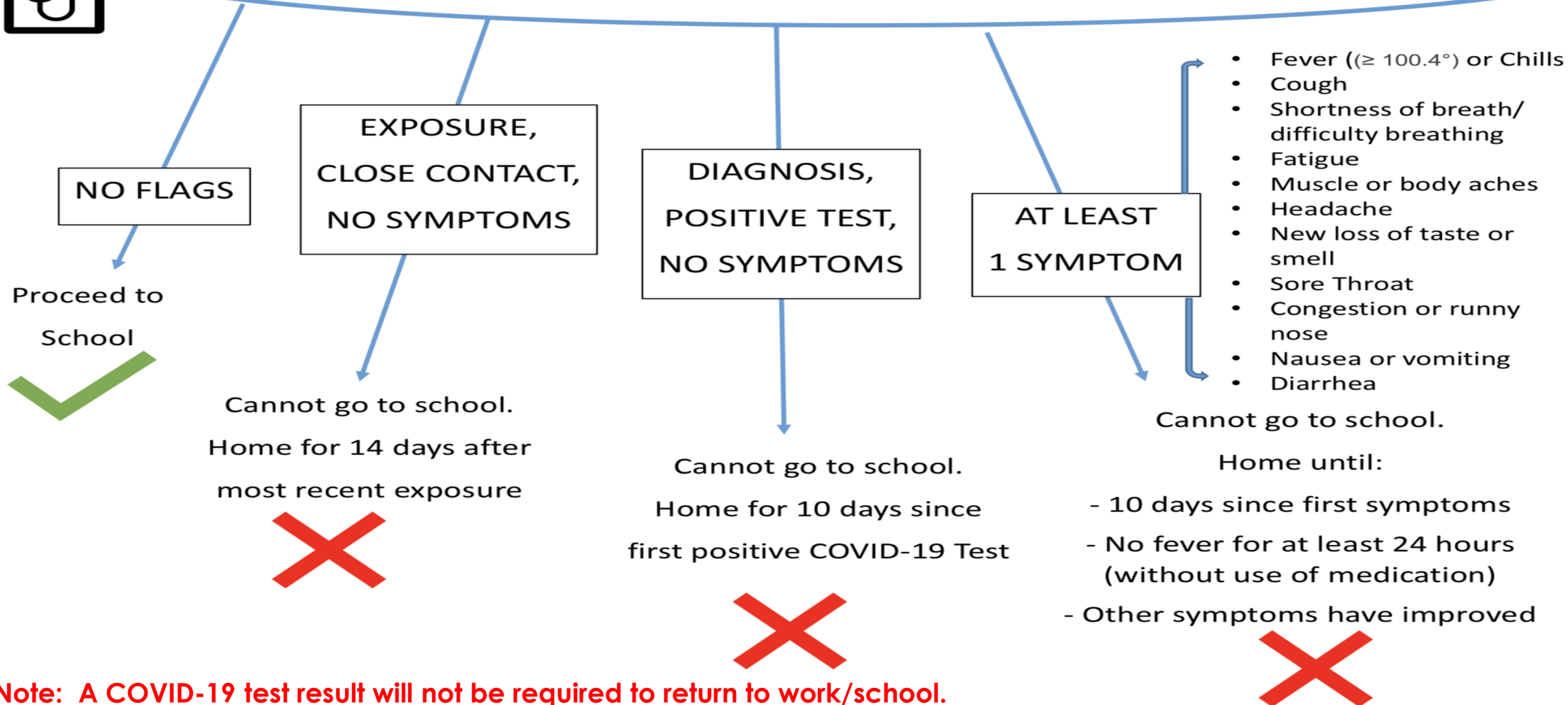


Stay up-to-date on COVID-19 news using from reliable sources such as the CDC, Arizona Department of Health Services, Maricopa County Department of Public Health and your district or school websites.

Screening for COVID-19



Screen for COVID-19



Note: A COVID-19 test result will not be required to return to work/school.

What we will do if someone tests positive for COVID-19 on our campus

- The student or staff member must have a positive “confirmed” case with lab results.
- Everyone that was in contact with the confirmed case for 15 minutes or more will be notified and will be required to be quarantined for 14 days from the last day they were in contact with the positive case.
- Parents will be highly encouraged to take their child to be tested for COVID-19, but this is NOT mandatory.
- If the parent decides to test their student for COVID-19 and the results are negative, the student must continue to be quarantined for the remainder of the 14 days.
- All staff and students are to stay home at all times if feeling sick.
- Positive confirmed case with lab results must be reported to the Arizona Department of Health by the school nurse.



From the Nurse's Office



Riverside Elementary School District
Riverside Traditional (602) 272-1339 / Kings Ridge (602) 477-8960



To: Parent or Guardian

Date: _____

From: _____

School Nurse

School

Subject: Corona Virus (COVID-19)

A positive case of COVID-19 has been found in your child's classroom. COVID-19 is a newly identified coronavirus which has caused a worldwide pandemic of respiratory illness that can affect infants, children, adults and the elderly.

COVID-19 is thought to spread mainly from person-to-person. Between people who are in close contact with one another (within 6 feet) and through respiratory droplets produced when an infected person coughs, sneezes or talks. These droplets can land in the mouths or noses of people who are nearby or possibly be inhaled into the lungs.

Symptoms: Symptoms may appear 2-14 days after exposure to the virus. People with these symptoms may have COVID-19:

- | | |
|--|----------------------------|
| <input type="checkbox"/> Fever or chills | • Loss of taste or smell |
| <input type="checkbox"/> Cough | • Sore throat |
| <input type="checkbox"/> Shortness of breath or difficulty breathing | • Congestion or runny nose |
| <input type="checkbox"/> Fatigue | • Nausea or vomiting |
| <input type="checkbox"/> Muscle or Body Aches | • Diarrhea |
| <input type="checkbox"/> Headache | |

Incubation Period: You must quarantine your child for 14 days from the date listed above in this letter. Symptoms may take 7-14 days after exposure to show signs of infection.

Action: If your child begins to show signs and symptoms of COVID-19, it is recommended you contact your child's physician and have your child tested. If your child test results are negative for COVID-19, you are still required to quarantine your child for the remainder of the 14 days. If your child tested positive, the child must quarantine for 10 days from the day they got tested.

Return to School: Students are cleared to return to in-person learning after 14 days have passed from the last day they came in contact with a positive case. Your child may return back to school on _____.

Our hope is that your children remain healthy. For further recommendations or information on COVID-19, please contact your child's primary care physician.

Sincerely,

Nurse Montiel (RTS) and Nurse Corona (KRPA)








When is it okay to return to school?

- **Student/staff member are clear to return to in-person learning after 14 days have passed since the last day they were in contact with the positive case.**
- **If student or staff member tests positive for COVID-19, they may return after 10 days have passed from the day they got tested, as long as no new symptoms have occurred and ALL symptoms have been resolved without taking any medications for 48 hours.**



Preparing for the Reopening

Return to School Risk Decisions

	 Campus Structure	 Social Distancing	 Face Coverings	 Grouping Students	 Transportation	 Meal Service	 Hygiene & Sharing
Lower	All on-line Instruction	Students remain at home for instruction	Students at home and wear face coverings in public	Students remain at home for instruction	Students stay home and require no transportation	Students at home do not utilize school cafeteria	Students stay home and conduct proper hand washing/sanitizing
Risk Level	All on-line Instruction with transition to on-campus instruction when less community transmission	Students remain at least 6 feet apart	All students, staff and visitors wear face coverings at all times with strict enforcement of mask use	Small groups of students stay together and with the same teacher all day, each day (cohort)	Students and staff on bus maintain 6 feet distance apart at all times	Students and staff eat in classroom or small groups with 6 feet distancing while served/eating	Hand washing/sanitizing conducted throughout the day. No sharing of items. Cleaning of high-touch surfaces throughout the day
	Some students on-line and some students on campus from beginning of school year	Students not distanced 6 feet apart. Use of plexiglass or similar dividers	Students and staff wear face coverings with moderate enforcement	Students are in larger groups with limited mixing between groups	Students and staff on bus maintain 6 feet distance apart at all times. Family units allowed to remain within 6 feet.	Students and staff eat in larger groups and maintain 6 feet distancing while served/eating	Hand washing/sanitizing conducted throughout the day. No sharing of items. Clean campus at beginning and end of day only.
Higher	All students on campus at beginning of school year	Students not distanced 6 feet apart. No dividers used	Face covering wear requirement not enforced for students, staff and visitors	Students are in large groups and mix between groups	Students on bus not distanced 6 feet apart	Students eat in large groups, mix between groups and are not distanced 6 feet apart	Limited hand washing/sanitizing. Items shared between students without cleaning. Campus only cleaned once per day

At Riverside We Do Our Part



We care, we wear our face mask!

Sharing the News for Reopening

Stakeholder	Setting the Stage	<u>Week 1</u> All 3 Benchmarks are Met	<u>Week 2</u> All 3 Benchmarks are Met	<u>Week 3</u> All 3 Benchmarks are Met	<u>Week 4</u> Announcing the Reopening of Schools	<u>Week 5</u> Schools Open
Staff	<ul style="list-style-type: none"> •The District will provide an informational presentation to all employees reviewing the necessary benchmarks needed to be attained and maintained in order to safely reopen the schools. •District employees will complete a survey to provide input on the presented plans for safely reopening our schools. 	<ul style="list-style-type: none"> •Principals/Supervisors will communicate with their employees on the status of the criteria for reopening our schools •Posted in each school’s and district’s website, employees will be kept informed of the current status for the safe reopening of our schools 	<ul style="list-style-type: none"> •Principals/Supervisors will communicate with their employees in order to review the plan and preparations needed for the safe reopening of our schools. 	<ul style="list-style-type: none"> •Principals/Supervisors will communicate with their employees in order to finalize the plan and preparations needed for the safe reopening of our schools. •Principals/Supervisors will announce the “return to campus” beginning Monday of Week 4 for all employees. 	<p>Principals/Supervisors will be available to any staff member who would like to review and/or need additional guidance on the reopening plan.</p>	<p>-Principals and departments will conduct a meeting during the first week to reassess the effectiveness of the reopening of the schools.</p> <p>Teachers will contact families that are not participating in distance learning nor attending in-person instruction at the school campus.</p>
Parent	<ul style="list-style-type: none"> •An informational presentation will be provided to the public during the Sep. 17th School Board meeting. This presentation is designed to highlight the necessary benchmarks needed to be attained and maintained in order to reopen our schools. 	<ul style="list-style-type: none"> •Posted in each school and district website, parents will be kept informed of the current status for the safe reopening of our schools. •A parent questionnaire will be utilized to collect feedback and information concerning the reopening of our schools. 		<p>Principals will conduct an open community ZOOM meeting to inform parents on the plans to re-open the schools.</p> <p>Parents will be provided with the “<i>Path to Recovery</i>” document located in our district website.</p>	<p>Principals will conduct robo calls via School Messenger to all district families announcing of the date and time of the re-opening of schools.</p> <p>Parents will receive a letter with pertinent information regarding the reopening of the school.</p> <p>The announcement of school reopening will be placed in all Riverside Elementary School District websites.</p> <p>Principals will be available for parents who would like additional information regarding the plan for reopening of the schools.</p>	<p>School Principals and nurses will be addressing any parent concerns concerning any parent questions in regards to the reopening of the schools.</p>

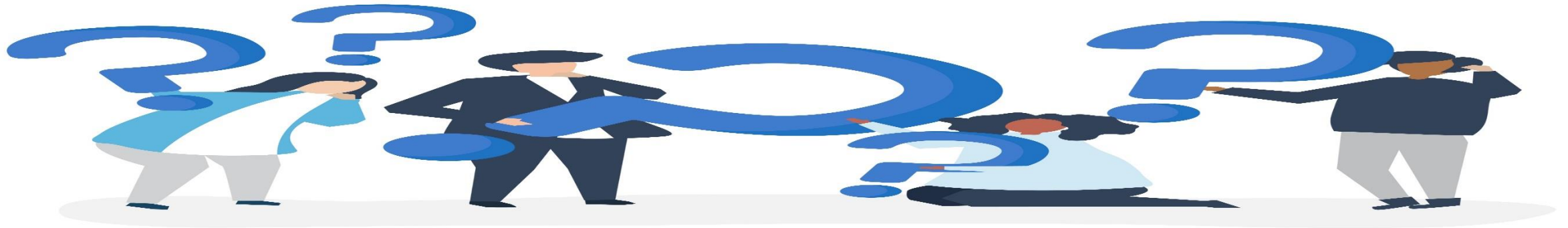


**Please contact your
school principal if you
have any questions:**

RTS (602) 272-1339

KRPA (602) 477-8960

MIT (602) 272-0006



STAY SAFE

RIVERSIDE!

